

S-1209XH High Temperature Hydrogen Furnace

Computer controlled eight-zone 1000C Hydrogen Furnace with 240 mm W belt and 50 mm H throat (furnace internal height) manufactured for a major semiconductor packaging company (California, USA) for clean room semi-conductor processing a hydrogen environment. Total heating length is 3050 mm. Options include hydrogen operation, nitrogen only operation and on-furnace mixing of pure hydrogen with nitrogen, on-screen monitoring of Moisture and Oxygen concentrations in 3 furnace zones, 380 mm gas cool transition and 2290 mm water cooling section, SHEMA product tracking, internet and network enabled. Pictures taken on site and at our facility in Orange, California. Startup Nov 2011.



S-1209XH High Temperature Hydrogen Furnace on Site
(7825 mm L x 960 mm W x 2030 mm H)



S-1209XH Furnace on Site with Lower Panels removed
(3250 mm L x 960 mm W x 1700 mm H, (240 mm belt)



S-1209XH Entrance showing
Hydrogen Sensor, SHEMA
Product Sensors and Ignitor



S-1209 Nitrogen/Hydrogen Mixing Console



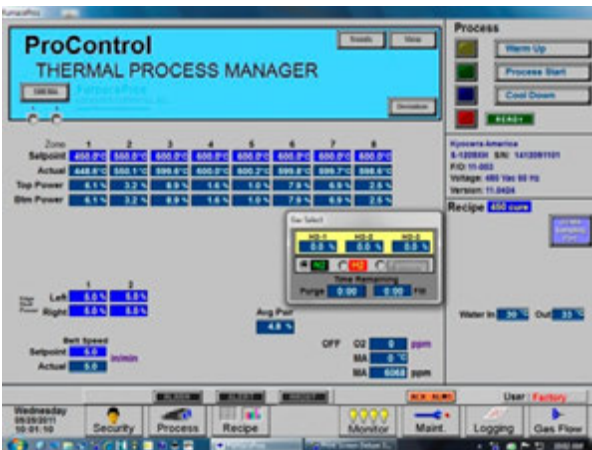
3-Port Sample System with Moisture & Oxygen Analyzers



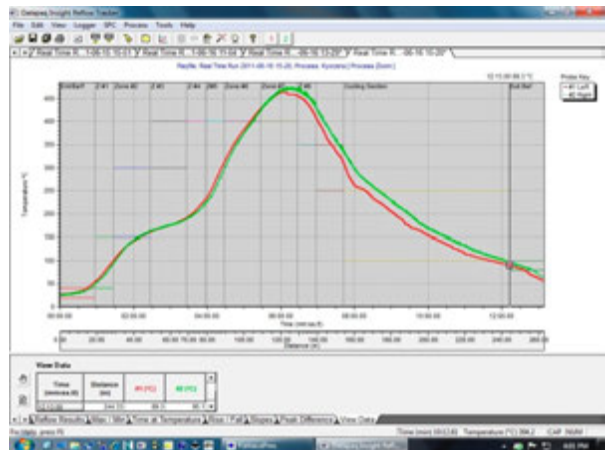
Exit showing Combustion Gas sensor, Collector & Igniters



S-1209XH 2-Lane SMEMA Product Sensors at Exit



S-1209XH High Temp 600 C Cure, belt speed 50 inch/min

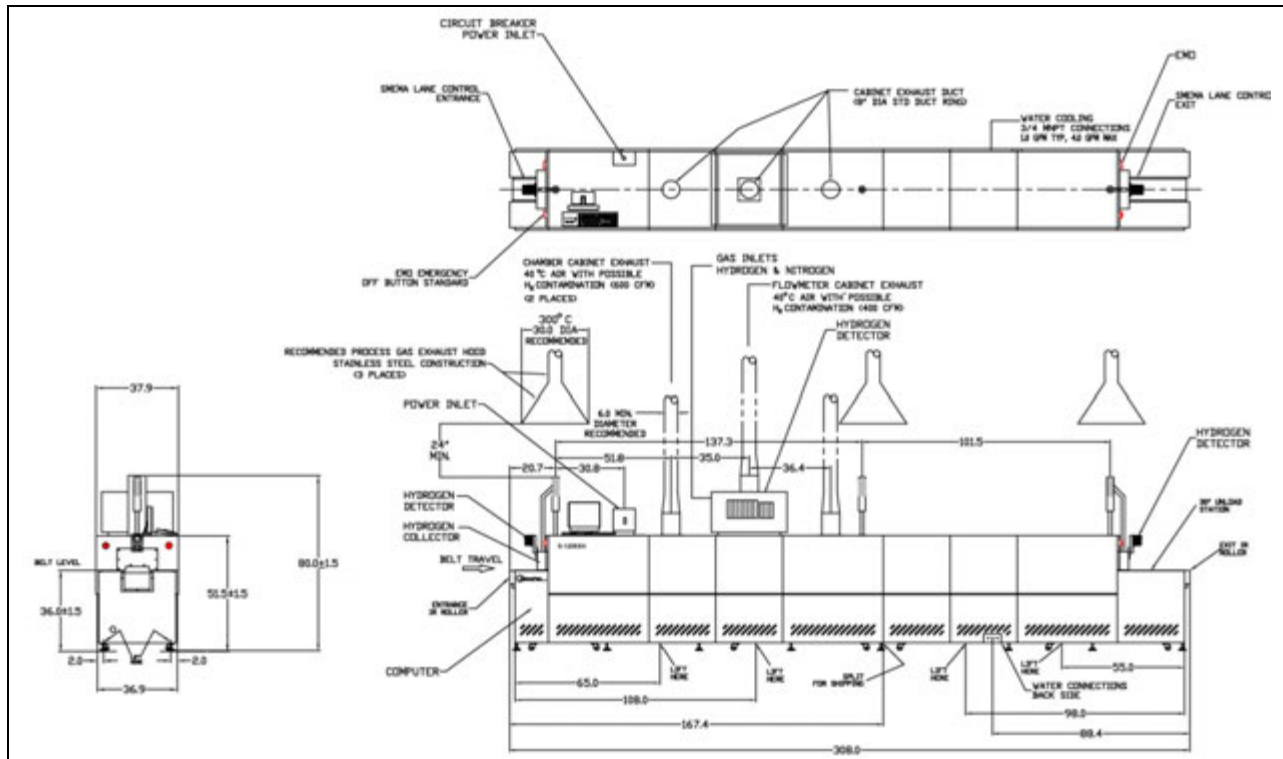


S-1209XH Peaking Profile @ 480C showing rapid cool down

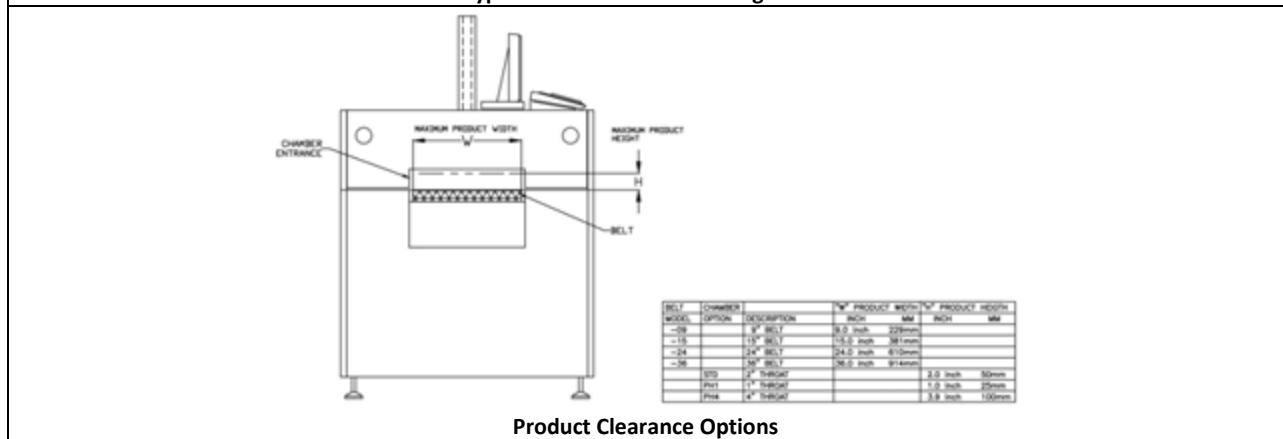


Above: S-1209XH Furnace Wiring. Below: Completed Furnace with all Panels off

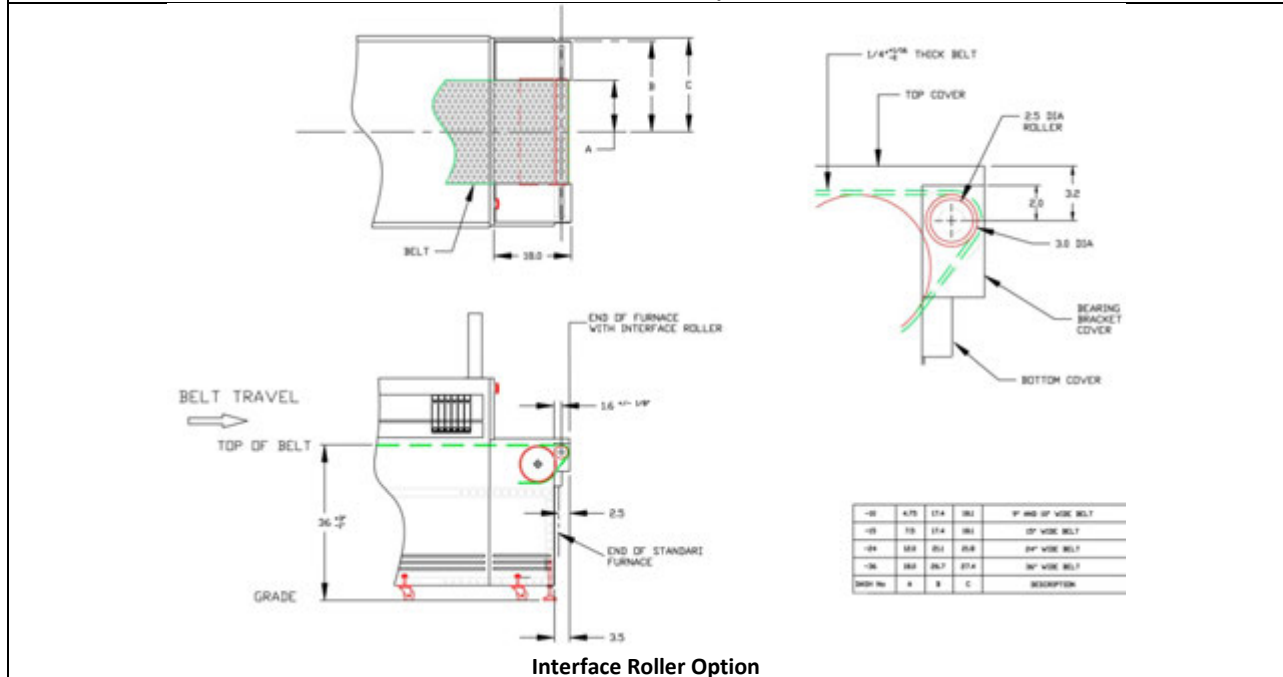




Typical LA-306 Furnace Arrangement



Product Clearance Options



Interface Roller Option