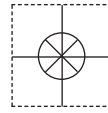


**1 YEAR**  
WARRANTY



# User's Guide

*Shop online at*

**omega.com<sup>®</sup>**

Ω OMEGA<sup>®</sup>

*omega.com*

*e-mail: info@omega.com*

*For latest product manuals:*

*omegamanual.info*

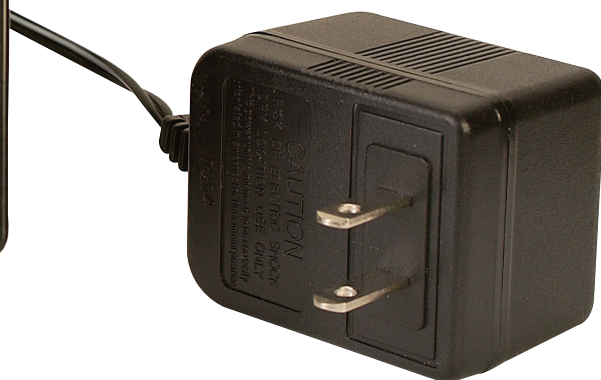
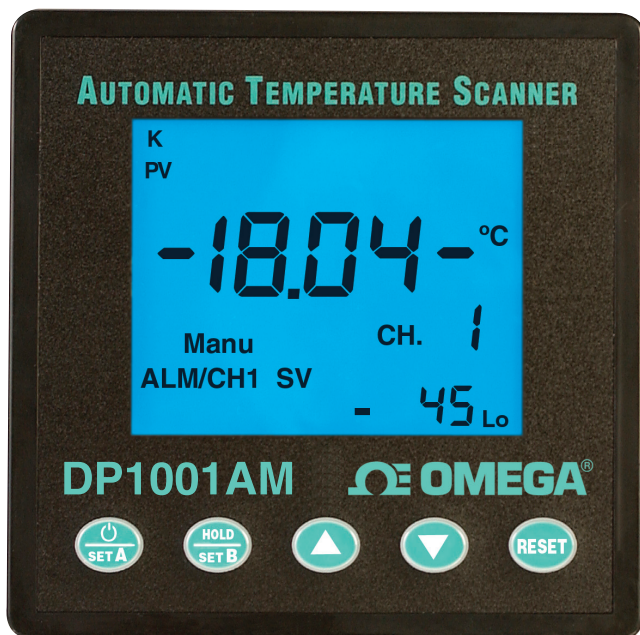
**ISO 9001**  
CERTIFIED  
CORPORATE QUALITY

STAMFORD, CT

**ISO 9001**  
CERTIFIED  
CORPORATE QUALITY

MANCHESTER, UK

MADE IN TAIWAN



# DP1001AM Automatic Temperature Scanner



**OMEGAnet® Online Service**  
**omega.com**

**Internet e-mail**  
**info@omega.com**

### **Servicing North America:**

**U.S.A.:**  
ISO 9001 Certified

Omega Engineering, Inc., One Omega Drive, P.O. Box 4047  
Stamford, CT 06907-0047 USA  
Toll Free: 1-800-826-6342                      TEL: (203) 359-1660  
FAX: (203) 359-7700                              e-mail: info@omega.com

**Canada:**

976 Bergar  
Laval (Quebec), H7L 5A1 Canada  
Toll-Free: 1-800-826-6342                      TEL: (514) 856-6928  
FAX: (514) 856-6886                              e-mail: info@omega.ca

### **For immediate technical or application assistance:**

**U.S.A. and Canada:** Sales Service: 1-800-826-6342/1-800-TC-OMEGA®  
Customer Service: 1-800-622-2378/1-800-622-BEST®  
Engineering Service: 1-800-872-9436/1-800-USA-WHEN®

**Mexico/  
Latin America**

En Español: 001 (203) 359-7803                      FAX: 001 (203) 359-7807  
info@omega.com.mx                              e-mail: espanol@omega.com

### **Servicing Europe:**

**Benelux:**

Managed by the United Kingdom Office  
Toll-Free: 0800 099 3344                      TEL: +31 20 347 21 21  
FAX: +31 20 643 46 43                              e-mail: sales@omegaeng.nl

**Czech Republic:**

Frystatska 184  
733 01 Karviná, Czech Republic  
Toll-Free: 0800-1-66342                      TEL: +420-59-6311899  
FAX: +420-59-6311114                              e-mail: info@omegashop.cz

**France:**

Managed by the United Kingdom Office  
Toll-Free: 0800 466 342                      TEL: +33 (0) 161 37 29 00  
FAX: +33 (0) 130 57 54 27                              e-mail: sales@omega.fr

**Germany/Austria:**

Daimlerstrasse 26  
D-75392 Deckenpfronn, Germany  
Toll-Free: 0800 6397678                      TEL: +49 (0) 7056 9398-0  
FAX: +49 (0) 7056 9398-29                              e-mail: info@omega.de

**United Kingdom:**  
ISO 9001 Certified

OMEGA Engineering Ltd.  
One Omega Drive, River Bend Technology Centre, Northbank  
Irlam, Manchester M44 5BD United Kingdom  
Toll-Free: 0800-488-488                      TEL: +44 (0) 161 777-6611  
FAX: +44 (0) 161 777-6622                              e-mail: sales@omega.co.uk

---

It is the policy of OMEGA Engineering, Inc. to comply with all worldwide safety and EMC/EMI regulations that apply. OMEGA is constantly pursuing certification of its products to the European New Approach Directives. OMEGA will add the CE mark to every appropriate device upon certification.

The information contained in this document is believed to be correct, but OMEGA accepts no liability for any errors it contains, and reserves the right to alter specifications without notice.

**WARNING:** These products are not designed for use in, and should not be used for, human applications.

# 10 channels Temperature Scanner

## DP1001AM

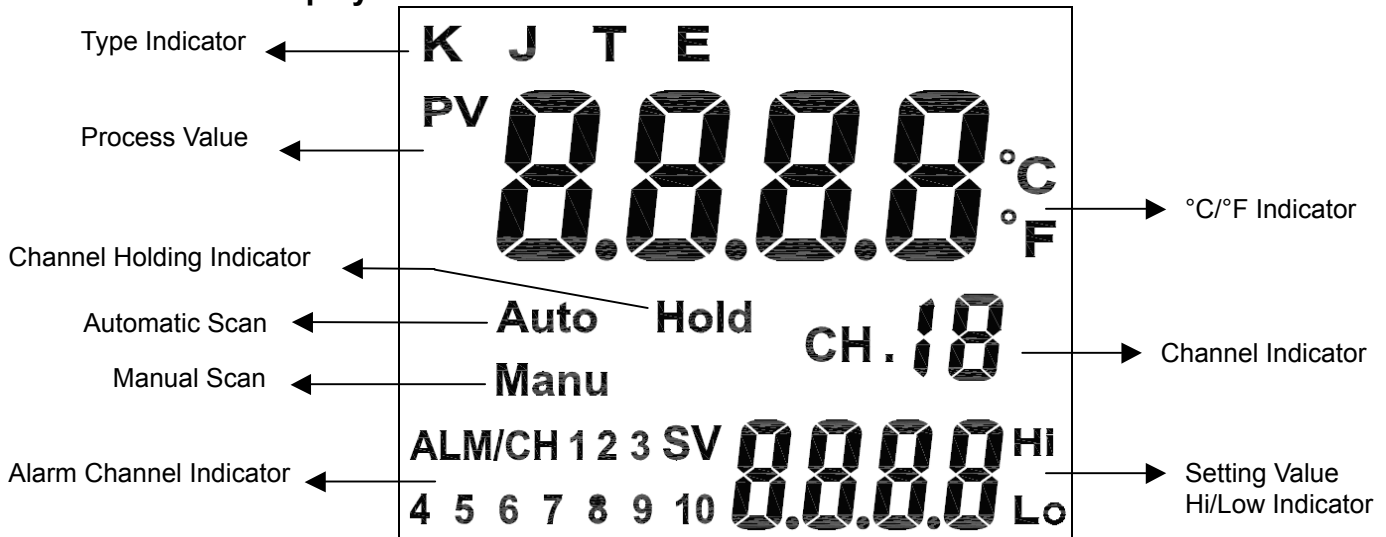
### Features:

- \_ Large LCD with backlight displays PV and SV value.
- \_ Latching Hi/Low alarm 5A(250VAC) with manual reset.
- \_ Each channel has individual, independent, and programmable alarm setpoint with alarm indicator.
- \_ Multi-mode for setting Channel number, °C/°F, Auto/Manual, Scan rate, K/J/T/E type and Hi/Low
- \_ RS232 communication for computer interface.

### Specifications:

Range	Type K	Type J	Type T	Type E
_	-58 ~ 2498	-58 ~ 1832	-184 ~ 752	-58 ~ 1382
_	-50 ~ 1370	-50 ~ 1000	-120 ~ 400	-50 ~ 750
Resolution	0.1(<1000), 1(>1000)			
Accuracy	0.15% of Reading ±1°C or 1.8°F			
Power	9V DC			
Channel	10 channels			
RS232	Yes			
Relay	Hi/Low			
Scan rate	2 ~ 60 sec.			

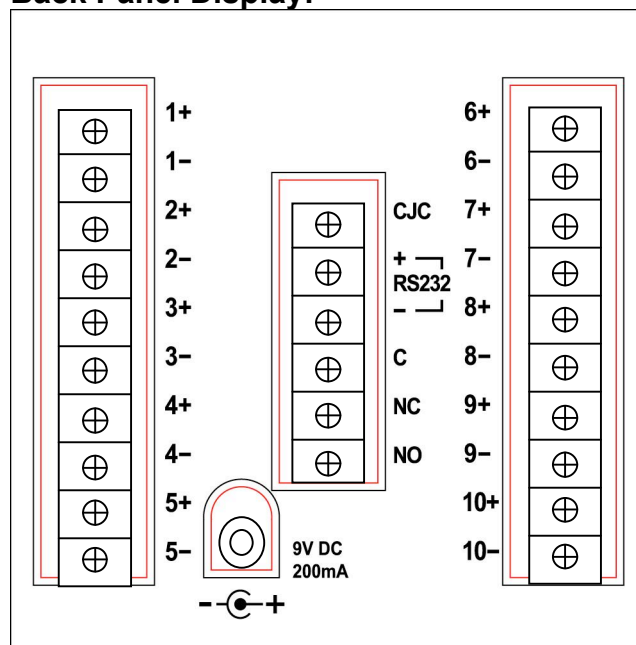
### LCD Display:



### Functions of Keyboard:

	<ol style="list-style-type: none"> <li>1. Press to turn on or off the power.</li> <li>2. Press and hold to enter Basic Setting.</li> </ol>
	<ol style="list-style-type: none"> <li>1. Press to keep monitoring the value of a certain channel under automatically scan mode.</li> <li>2. Press and hold to enter Hi/Low Setting.</li> </ol>
	<ol style="list-style-type: none"> <li>1. Switch channels under manually scan mode.</li> <li>2. Adjust values in Basic and Hi/Low Setting.</li> </ol>
	<ol style="list-style-type: none"> <li>1. Press to turn on the backlight for 10 minutes under backlight-off mode.</li> <li>2. Press and hold to reset the alarm of each channel.</li> </ol>

### Back Panel Display:







**All of the channel labels:** Each channel requires a positive and negative wire. This picture shows which channels represent which input terminals and if they are negative or positive.

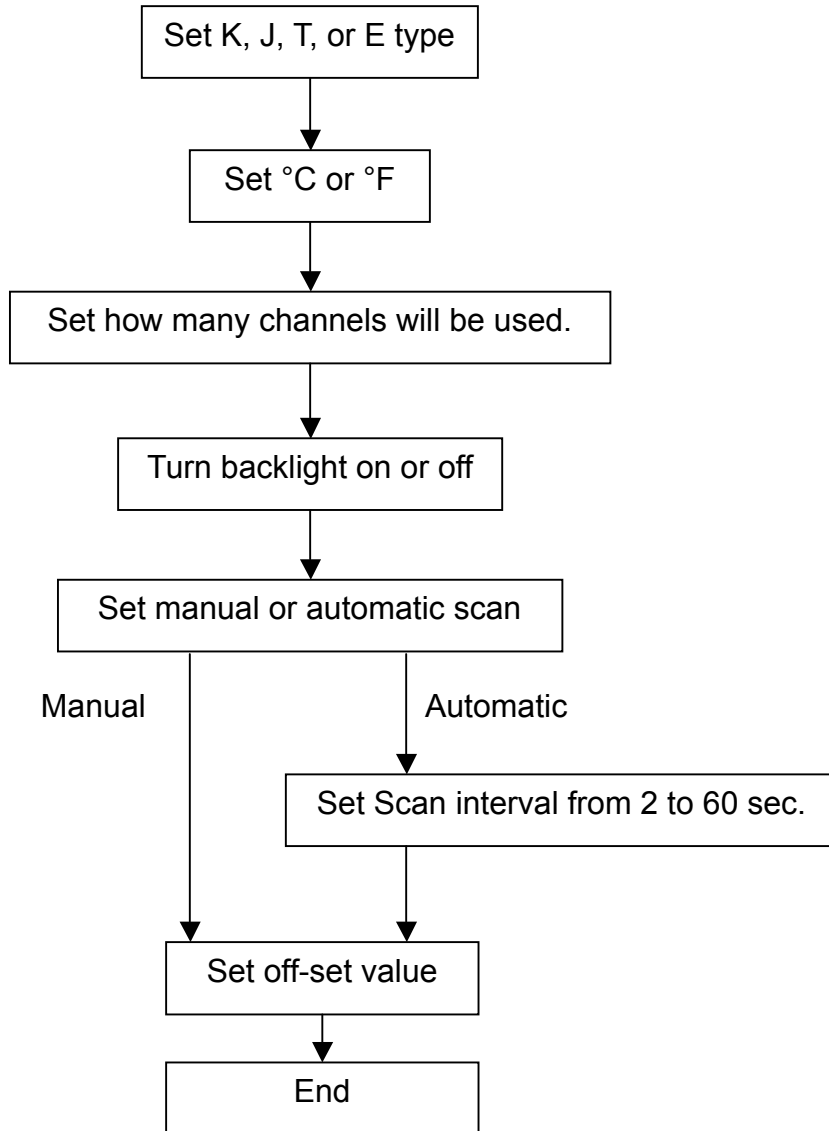
**RS232 port:** This is the port used when you want to hook up the Automatic Temperature Scanner to a computer.

**C, NC, NO:** Common, Normal Closed, Normal Open for relay.





**9V DC/200mA:** Please use an adaptor with 9V DC/200mA for input power.

### Basic Setting(SET A):

Press and hold  for 3 seconds to enter Basic Setting. During this setting, please use  and  to adjust setting values. Press  to confirm setting values and enter next setting.



### Hi/Low Setting(SET B):

Press and hold  for 3 seconds to enter Hi/Low Setting. During this setting, please use  and  to set “Hi” or “Low” and adjust the setting values for each channel. Press  to confirm and enter next setting.

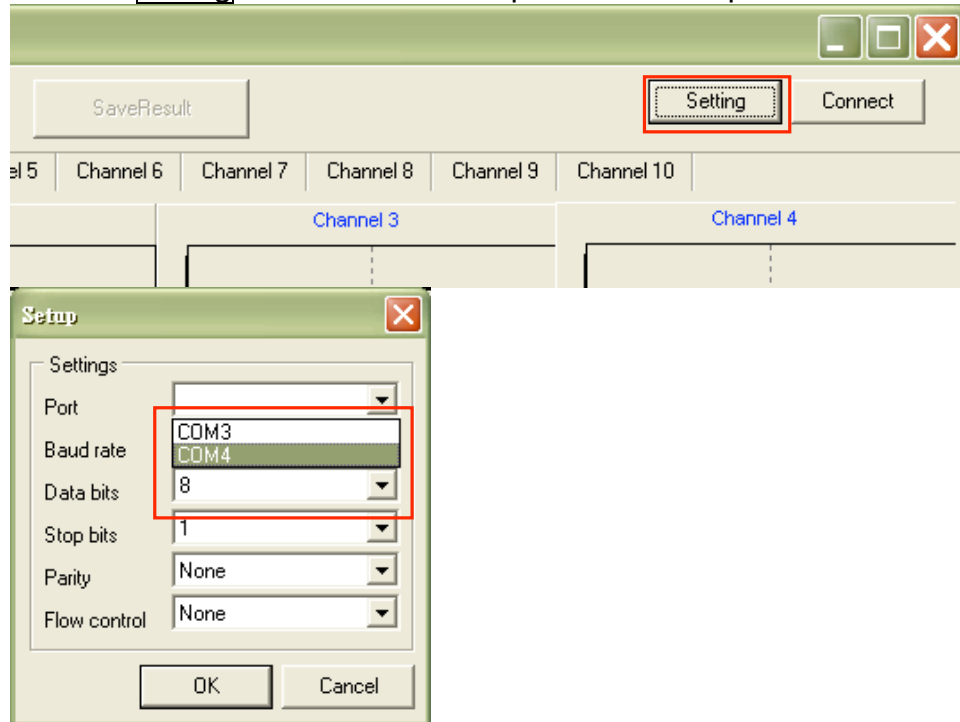
## Connect to PC:

### <System Requirement>

OS: Windows 2000, Windows XP, Windows Vista, Windows 7.

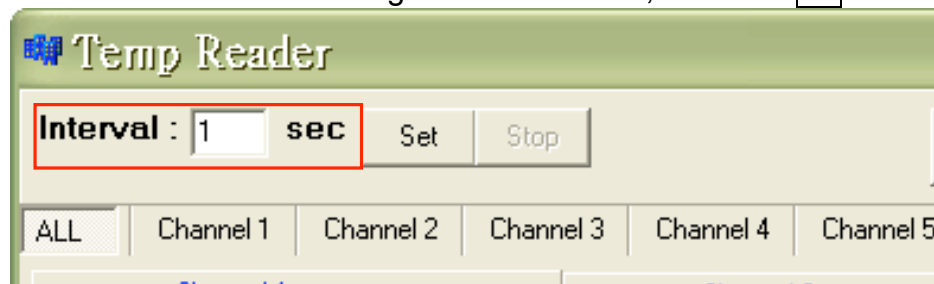
### <Operations>

1. Copy "GOnDO\_Temp.exe" from the CD-ROM to a folder.
2. Double-click "GOnDO\_Temp.exe" to start the program.
3. Click setting button to set COM port in the Setup window.

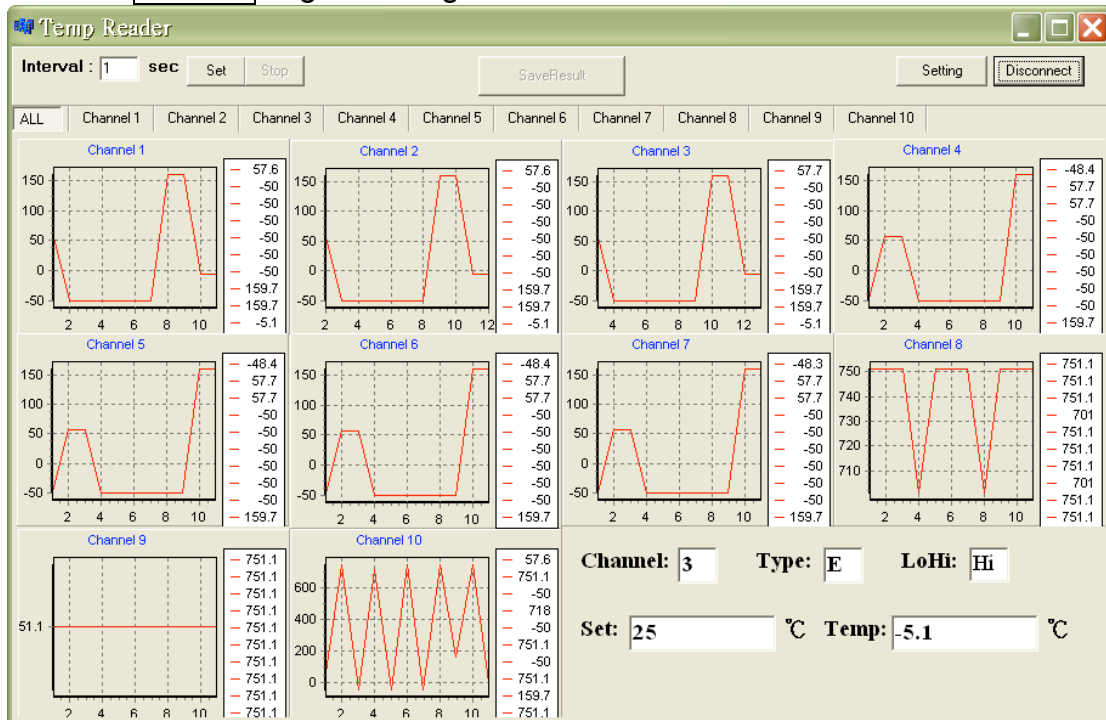


Choose the responding Port and then click OK. In normal situation, other settings do not need to be changed.

4. Fill in desired measuring interval seconds, and click set.

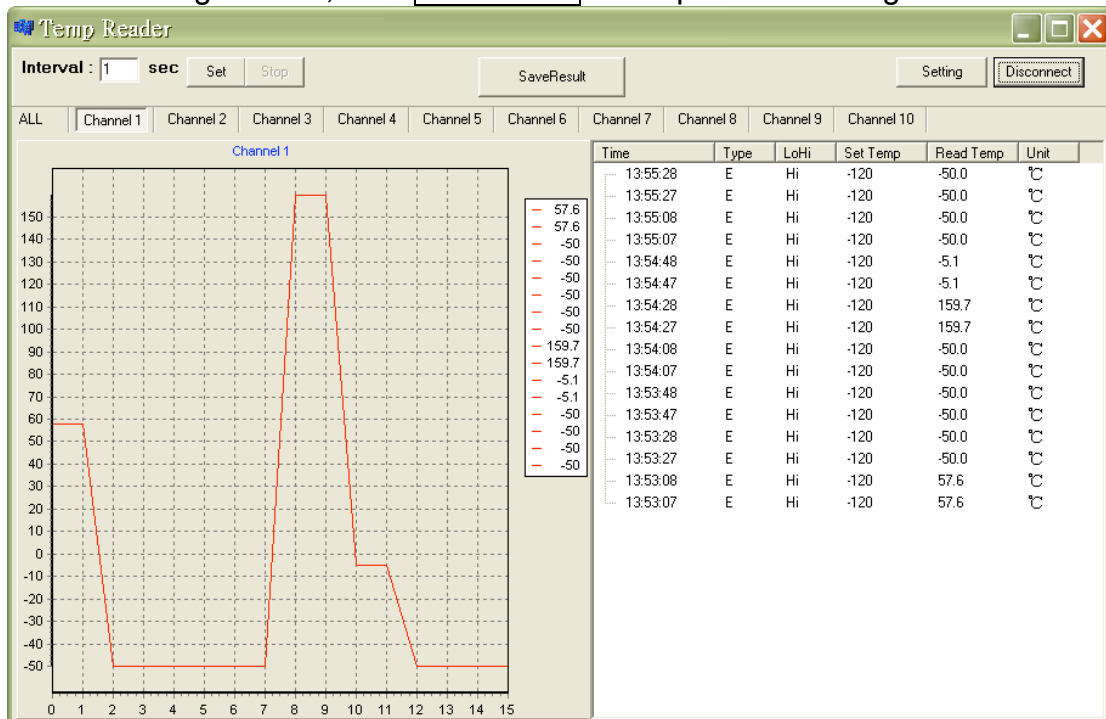


5. Click **Connect** to get readings and draw the curve.



6. Click the small tab of each channel in the main window can enter a big window with detail reading information. Click tab **ALL** to back to the main window.

7. In each big window, click **SaveResult** will export the readings to .txt file.



**Note:**

Please click **Disconnect** or close the program before turn off power or remove the RS-232 cable.

## WARRANTY/DISCLAIMER

OMEGA ENGINEERING, INC. warrants this unit to be free of defects in materials and workmanship for a period of **13 months** from date of purchase. OMEGA's WARRANTY adds an additional one (1) month grace period to the normal **one (1) year product warranty** to cover handling and shipping time. This ensures that OMEGA's customers receive maximum coverage on each product.

If the unit malfunctions, it must be returned to the factory for evaluation. OMEGA's Customer Service Department will issue an Authorized Return (AR) number immediately upon phone or written request. Upon examination by OMEGA, if the unit is found to be defective, it will be repaired or replaced at no charge. OMEGA's WARRANTY does not apply to defects resulting from any action of the purchaser, including but not limited to mishandling, improper interfacing, operation outside of design limits, improper repair, or unauthorized modification. This WARRANTY is VOID if the unit shows evidence of having been tampered with or shows evidence of having been damaged as a result of excessive corrosion; or current, heat, moisture or vibration; improper specification; misapplication; misuse or other operating conditions outside of OMEGA's control. Components in which wear is not warranted, include but are not limited to contact points, fuses, and triacs.

**OMEGA is pleased to offer suggestions on the use of its various products. However, OMEGA neither assumes responsibility for any omissions or errors nor assumes liability for any damages that result from the use of its products in accordance with information provided by OMEGA, either verbal or written. OMEGA warrants only that the parts manufactured by it will be as specified and free of defects. OMEGA MAKES NO OTHER WARRANTIES OR REPRESENTATIONS OF ANY KIND WHATSOEVER, EXPRESS OR IMPLIED, EXCEPT THAT OF TITLE, AND ALL IMPLIED WARRANTIES INCLUDING ANY WARRANTY OF MERCHANTABILITY AND FITNESS FOR A PARTICULAR PURPOSE ARE HEREBY DISCLAIMED. LIMITATION OF LIABILITY: The remedies of purchaser set forth herein are exclusive, and the total liability of OMEGA with respect to this order, whether based on contract, warranty, negligence, indemnification, strict liability or otherwise, shall not exceed the purchase price of the component upon which liability is based. In no event shall OMEGA be liable for consequential, incidental or special damages.**

CONDITIONS: Equipment sold by OMEGA is not intended to be used, nor shall it be used: (1) as a "Basic Component" under 10 CFR 21 (NRC), used in or with any nuclear installation or activity; or (2) in medical applications or used on humans. Should any Product(s) be used in or with any nuclear installation or activity, medical application, used on humans, or misused in any way, OMEGA assumes no responsibility as set forth in our basic WARRANTY/DISCLAIMER language, and, additionally, purchaser will indemnify OMEGA and hold OMEGA harmless from any liability or damage whatsoever arising out of the use of the Product(s) in such a manner.

## RETURN REQUESTS/INQUIRIES

Direct all warranty and repair requests/inquiries to the OMEGA Customer Service Department. BEFORE RETURNING ANY PRODUCT(S) TO OMEGA, PURCHASER MUST OBTAIN AN AUTHORIZED RETURN (AR) NUMBER FROM OMEGA'S CUSTOMER SERVICE DEPARTMENT (IN ORDER TO AVOID PROCESSING DELAYS). The assigned AR number should then be marked on the outside of the return package and on any correspondence.

The purchaser is responsible for shipping charges, freight, insurance and proper packaging to prevent breakage in transit.

FOR **WARRANTY** RETURNS, please have the following information available BEFORE contacting OMEGA:

1. Purchase Order number under which the product was PURCHASED,
2. Model and serial number of the product under warranty, and
3. Repair instructions and/or specific problems relative to the product.

FOR **NON-WARRANTY** REPAIRS, consult OMEGA for current repair charges. Have the following information available BEFORE contacting OMEGA:

1. Purchase Order number to cover the COST of the repair,
2. Model and serial number of the product, and
3. Repair instructions and/or specific problems relative to the product.

OMEGA's policy is to make running changes, not model changes, whenever an improvement is possible. This affords our customers the latest in technology and engineering.

OMEGA is a registered trademark of OMEGA ENGINEERING, INC.

© Copyright 2011 OMEGA ENGINEERING, INC. All rights reserved. This document may not be copied, photocopied, reproduced, translated, or reduced to any electronic medium or machine-readable form, in whole or in part, without the prior written consent of OMEGA ENGINEERING, INC.



# Where Do I Find Everything I Need for Process Measurement and Control? **OMEGA...Of Course!** *Shop online at [omega.com](http://omega.com)<sup>sm</sup>*

## **TEMPERATURE**

- Thermocouple, RTD & Thermistor Probes, Connectors, Panels & Assemblies
- Wire: Thermocouple, RTD & Thermistor
- Calibrators & Ice Point References
- Recorders, Controllers & Process Monitors
- Infrared Pyrometers

## **PRESSURE, STRAIN AND FORCE**

- Transducers & Strain Gages
- Load Cells & Pressure Gages
- Displacement Transducers
- Instrumentation & Accessories

## **FLOW/LEVEL**

- Rotameters, Gas Mass Flowmeters & Flow Computers
- Air Velocity Indicators
- Turbine/Paddlewheel Systems
- Totalizers & Batch Controllers

## **pH/CONDUCTIVITY**

- pH Electrodes, Testers & Accessories
- Benchtop/Laboratory Meters
- Controllers, Calibrators, Simulators & Pumps
- Industrial pH & Conductivity Equipment

## **DATA ACQUISITION**

- Data Acquisition & Engineering Software
- Communications-Based Acquisition Systems
- Plug-in Cards for Apple, IBM & Compatibles
- Data Logging Systems
- Recorders, Printers & Plotters

## **HEATERS**

- Heating Cable
- Cartridge & Strip Heaters
- Immersion & Band Heaters
- Flexible Heaters
- Laboratory Heaters

## **ENVIRONMENTAL MONITORING AND CONTROL**

- Metering & Control Instrumentation
- Refractometers
- Pumps & Tubing
- Air, Soil & Water Monitors
- Industrial Water & Wastewater Treatment
- pH, Conductivity & Dissolved Oxygen Instruments