

## 2.1 Power Controls and Indicators

### 2.1.1 Power Status Indicators

#### MAIN POWER ON - White Indicator

This lamp burns continuously whenever power is available to the furnace. The 3-phase disconnect switch (optional) and main circuit breaker (optional) must be turned on.

#### FURNACE POWER ON - Green Indicator

This lamp burns continuously when the control circuits are energized, and indicates that power is available to actuate the control circuits.



Figure 2.1.1 Control Panel showing Furnace Power ON and OFF and Indicator Lights



Figure 2.1.2 Control Panel, Rear showing monitor and USB ports.

#### ALARM HORN -Black Audible Alarm

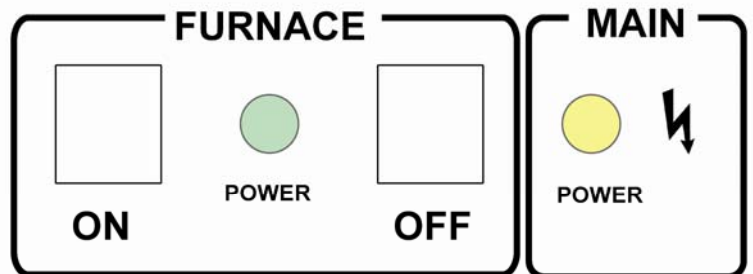
This horn provides audible feedback for furnace system alarm conditions.

#### UCD - Fill, Run & Drain Indicating Lamps – (option not included)

Lamps light to indicate status of Ultrasonic Cleaner Dry system. See logic table on drawing 802-101787.

### 2.1.2 Controls

Figure 2.1.3 Control Panel



## Section 2

### MAIN FURNACE POWER



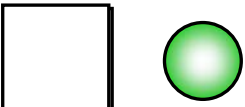
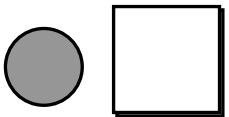



Table 2-1 Main Furnace Power		
MODE	ON	OFF
MAIN FACILITY BREAKER	Power to TR0 only: 1. MAIN POWER light (white) on 2. PC-S1 and PC-S2 sockets live for PC and monitor	No power to furnace
3-PHASE DISCONNECT SWITCH  	Lockable switch interlocked with safety panel cover. Switch must be turned OFF to enable removal of lower access panel. When switch is OFF, Power is disconnected from all furnace circuits (except 3-phase power connection to hot side of disconnect switch inside switch enclosure). Padlock switch to assure power remains OFF during maintenance.  Switch must be turned to ON to provide power to furnace.	No power to furnace
MAIN POWER ON  	Lamp illuminates indicating that 3-phase power is connected to the furnace and the main disconnect switch is ON.	No power to furnace
FURNACE POWER ON    FURNACE POWER OFF  	Power to furnace and furnace PLC controller. Pressing this momentary switch causes the furnace to go through its power up sequence, providing the MAIN POWER lamp is lit and the EMOs (Emergency Power Off switches) and interlocks located in the doors are released. 24 Vac controls active only if EMO and panel interlocks allow: 1. K2 mechanical relay latches up, FURNACE POWER light (green) on. 2. K6 mechanical relay sends switched 117 Vac power to belt motor, Opto22, gas supply valves, EM, and hour meter. 3. K3 contactor energizes phase transformers TR1, TR2 & TR3; all 117 and 24 Vac power control signals and accessories turn on.	Cuts power to furnace and furnace PLC controller. Pressing this button causes the furnace to begin a timed power shutdown sequence. The heaters are shut down immediately, and after Cool-Down (below 100°C), the fans, transport belt, and other functions are shut down. Upon final shut-down inlet process gas valves will close 1. K2 mechanical relay turns off entire control system. 2. K6 mechanical relay turns off. Belt motor, Opto22, gas supply valves, EM, and hour meter stop instantly, unless COOL DOWN clicked on PROCESS screen prior to OFF button being pushed. 3. K3 contactor turns off. All 117 Vac and 24 Vac control signals and accessories stop instantly, unless COOL DOWN clicked on PROCESS screen prior to OFF button being pushed. 4. K1 lamp contactor shuts off, removing power to lamps and edge heaters.
EPO PANEL SWITCHES	If an lower panel is removed,	

Table 2-1 Main Furnace Power		
MODE	ON	OFF
	emergency power interlocks will automatically cut power to furnace, PLC controller and furnace. Computer and monitor stay on.	
<p>EMO SWITCHES</p>  <p>Entrance EMO</p>  <p>Exit EMO</p>	<p>Operator activated Emergency Power Off switch located at furnace entrance and exit immediately cuts power to furnace and PLC controller. Computer and monitor stay on.</p> <p>Rotate knob to reset.</p> <p>Main Power button be pressed to re-introduce power.</p>	
POWER FAILURE	Cuts power to furnace, controller and computer monitor.	
SOFTWARE MODE	WARMUP	COOL DOWN
PROCESS SCREEN	<p>If FURNACE POWER is ON,</p> <p>1) energizes lamps and edge heaters via K1 lamp contactor,</p> <p>If FURNACE POWER is OFF, no effect</p>	<p>If furnace is in WARM UP or PROCESS READY modes,</p> <p>1. provides power to K6 mechanical relay and K3 contactor until temperature reading in all zones &lt; 100C; then</p> <p>2) shuts off K6 and K3 (see FURNACE POWER button OFF),</p> <p>Otherwise no effect</p>

**COMPUTER POWER**

The computer has been wired to be powered from an un-switched power source.

**COMPUTER UNSWITCHED (Default).** As delivered the computer and monitor are wired to remain ON unless either is individually shut down at the computer or monitor or if main power is removed from the furnace. This mode offers the best protection for the computer operating system, files and hard drives. Power to the computer is supplied when power is supplied to the furnace. The momentary power button on the front of the computer must be pressed to start the computer.

Note: Pressing FURNACE POWER OFF on the Furnace Console will not cut power to the computer or monitor.

## Section 2

### 2.2 Starting the Furnace

#### 2.2.1 Main Power Indicator

The MAIN indicator must be lit before pressing the MAIN POWER ON button.

#### 2.2.2 Process Gas Pressure

Assure that clean dry compressed process gas is supplied to the furnace at a minimum of 70 psig. Compressed gas must be delivered to the furnace walls, exit stack venturi and belt tensioners for proper operation of the furnace. If furnace is supplied with Auto Gas Shutoff feature, process gas will flow when Furnace Power ON is pressed.

#### 2.2.3 Power On/Startup

Follow the steps per the STARTUP table to start the furnace. See section 2.4.10 if restarting from Auto Shutdown

Table 2-2 Starting the Furnace	
<b>1. Main Power</b>	Verify the Main Power ON button is lit. Disconnect switch should be on, all panels in place and EMO switches reset.
<b>2. Furnace ON</b>	Press Furnace Power ON button. Furnace ON light illuminates.
<b>3. Computer ON</b>	Open the computer enclosure door, press the Computer start button on the tower to start the computer. The computer boots up and the logo screen is displayed. Furnace software starts. Computer and PLC begin to communicate.
<b>4. Monitor ON</b>	Press the power button on the monitor if you do not see the logo screen.
<b>5. Start Program</b>	Press Furnace program icon to initialize communication with the PLC and start the furnace program.  Log in to furnace software. Log-in is only possible when PLC and Computer are communicating.



**CAUTION:** Dangerous voltages are now present throughout the electrical systems of the furnace. Make sure that any probes in the furnace are placed on the belt surface only. Probes extending over the sides of the belt may contact high voltage terminals!

#### 2.2.4 Fans

Check that the control enclosure fans, the cabinet cooling exhaust fans, and the turbulent product cooling fans are turning. If the exhaust for the furnace is located on the bottom of the machine, it is important to have the bottom fan at greater than or equal to the power of the top fan. If this is not done the cooling system will not work properly.

#### 2.2.5 Screen Menu Bar (located at bottom of screen)

The Screen Menu Bar allows operator to select the desired screen by moving the cursor and clicking on the chosen screen button. Note: Menu bar will vary according to furnace features.



Figure 2.2.1 Screen Button Menu

### 2.2.6 Furnace Log-on and Initial Operation

Select “Security” button to access the “Security and User Information” screen.

#### 1) Security and User Information

The Security and User Information screen allows the operator to select access level, log-on or log-off, add or delete users, and modify password and access codes.

#### 2) Access Level

Select Access Level by clicking on the User List, click Log-On and enter the appropriate password and select Ok.

The system is shipped with three (3) access levels, each with its own password. See the Furnace Reference Manual, Chapter 5 Software, for information on managing users and passwords.

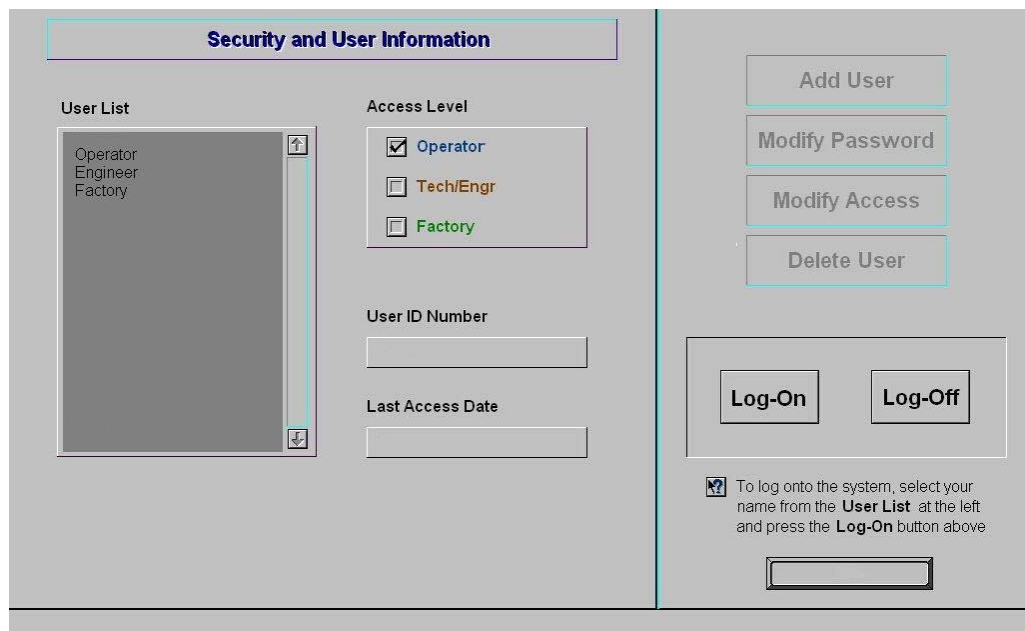


Figure 2.2.2 Security Screen, Log-on

- |                          |  |
|--------------------------|--|
| Access Level 1 password: | 1. Operator level, and allows the operator to load and run a recipe and initiate a process. (Initial password is set to “1”.)  |
| Access Level 2 password: | 2. Tech/Engr level. It allows the Technician or Engineer to do all of the above, as well as changing parameters such as temperature setpoints, power distribution, and belt speed. (Initial password is set to “2”.) |
| Access Level 3           | restricted to Manufacturer’s personnel only.   |

**NOTE:** Before turning off furnace computer, you must “Log-Off” through the Security screen and Shutdown Windows.

## Section 2

### 2.2.7 Atmosphere Supply Gas - CDA

#### FURNACE PROCESS GAS SYSTEM

Plant supply process gas must be filtered and regulated to 70 psi before the furnace to assure consistent clean dry process gas is supplied during furnace operation. An internal gas reservoir with check valve further regulates gas pressure to 15 psi for the belt tensioners.

If the furnace air pressure drops below the set point during operation, the operator should put the furnace into Cool Down. The operator can reset the system to Warm Up when air pressure is again over 70 psig.

Table 2-3 Gas Supply Pressure		
Location	Default Setting	
Plant Process Gas Regulator	70-110 psig	4.8-7.6 bar
Furnace Regulator (optional)	60-70 psig	4.1-4.8 bar
Low Pressure Alarm Switch	55 psig	3.8 bar

See Section 3 for information calibration and service of the pressurized gas (N<sub>2</sub>/CDA) system.

**WARNING:** The flowmeters on these furnaces are rated at 70 psi maximum. Operating above 70 psi exposes the operator to possible injury.

#### Flow Meter Default Settings

Select the Gas Flow button. The Gas Flow screen will be shown. Open the furnace flowmeter access panel and adjust the gas flow to the default flows indicated on the screen or per process recipe requirements. See Owner's Manual, Engineering section for default settings. See Reference Manual, Chapter 9, Balancing Gas Flow for information on setting the flow meters to balance the system gas flow.

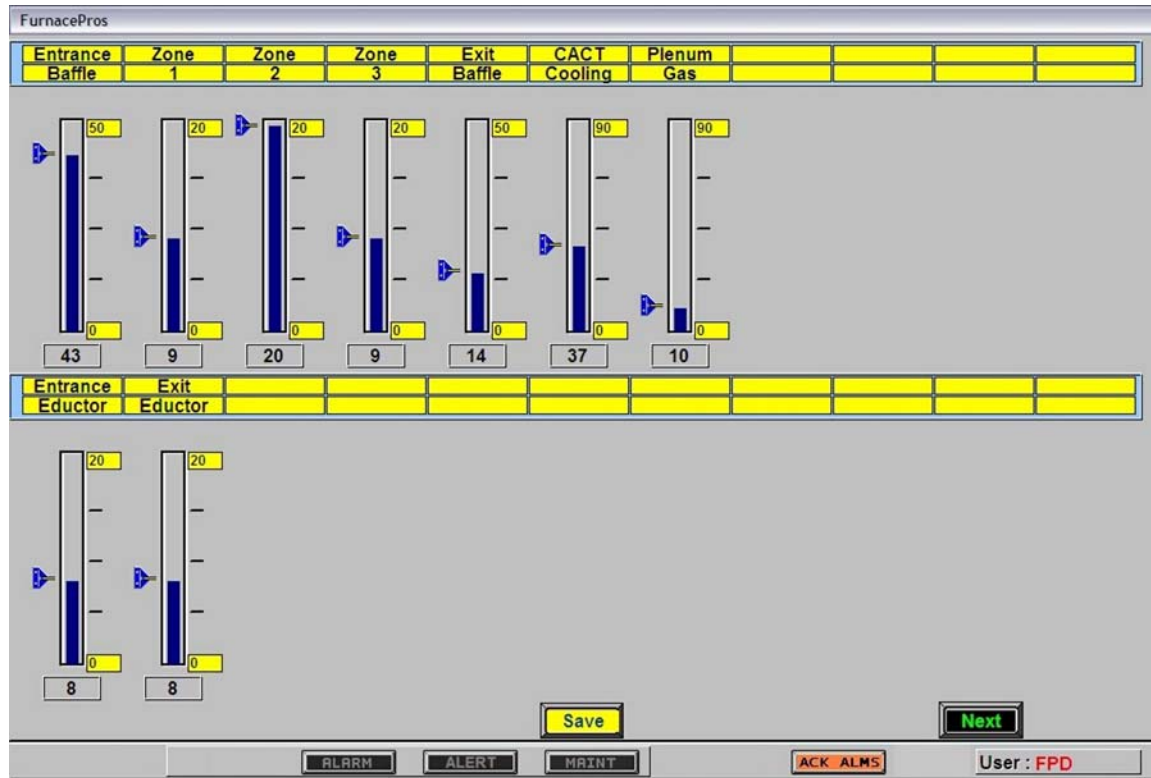


Figure 2.2.3 Gas Flow Screen

### 2.3 Furnace Operation (Process Screen)

The Process Monitor Screen displays the setpoint temperature, the current recipe, process state and status, transport speed, and other information such as percentage of power to elements and edge heaters. Alarm and alert dialog box also is displayed here along with event status.

1) Select the Process button on the menu bar view the process screen.

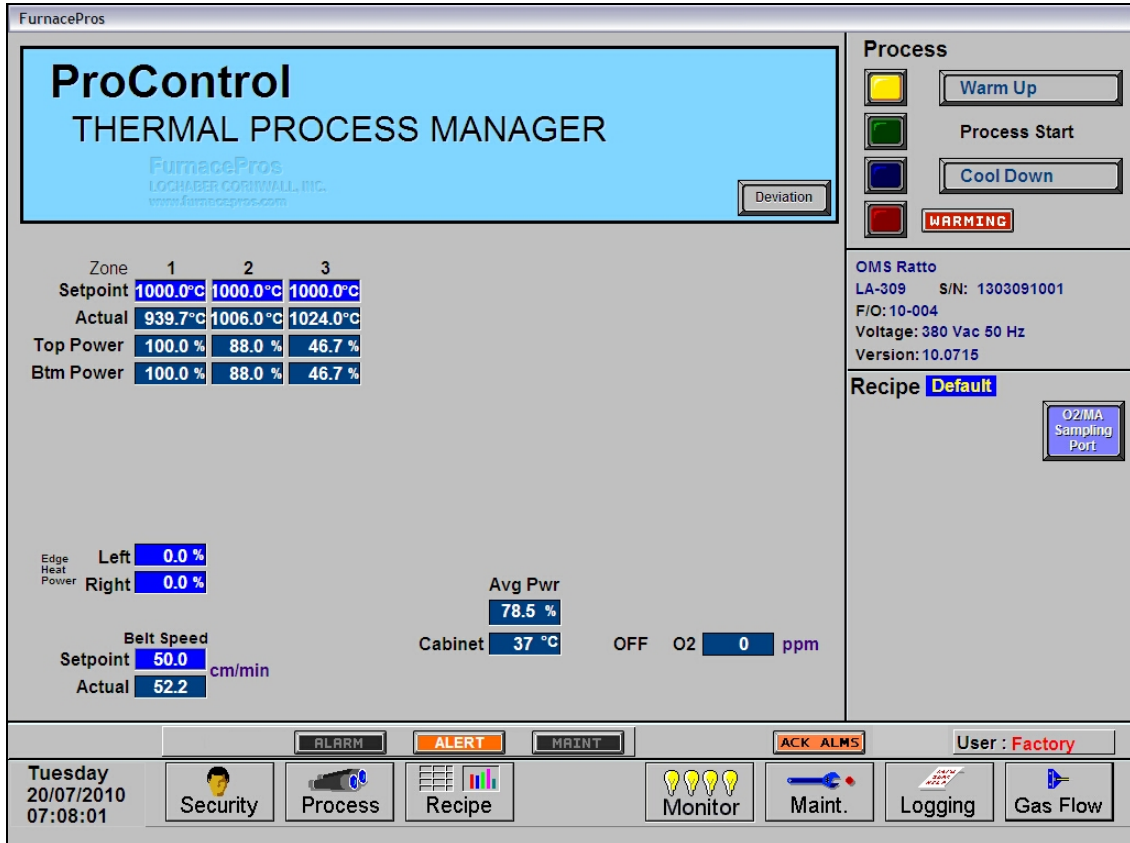


Figure 2.3.1 Process Screen

2) View Temperature Deviation Screen.

When on the Process Screen, the user can activate the Deviation screen by clicking on the Deviation button. The screen will show the deviation of measured temperature from set point for each zone. The vertical bars are green for process ready conditions by zone, and change color independently as the deviation in a given zone changes.

The user can drag the Deviation screen to another location on the Process Screen or close the screen at any time.

3) Check to assure that there are no active alarms or alerts.

If appropriate, move cursor to and click on “ACK ALMS” to clear or silence an alarm/alert in order to proceed with furnace operation. If alarm/alert does not clear, see Troubleshooting in Section 3.

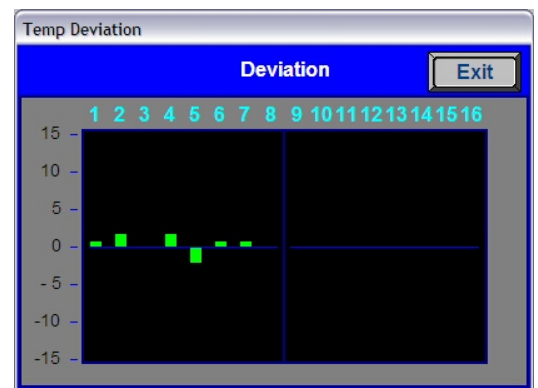


Figure 2.3.2 Temperature Deviation Screen

## Section 2

---

### 4) Verify correct recipe is loaded.

Verify correct recipe is loaded. If not, click on RECIPE button for “Recipe” screen or enter the zone set point temperatures and belt speed by clicking on respective the blue fields and typing the correct number.

### 5) In Process field, select “WARM UP” to initiate the process selected.

In the “WARM UP” mode, the heating elements will come on. After 10 minutes, check the system for instability or cycling, and correct if necessary.

While the machine is heating, check for alarms and listen for the alarm buzzer. In particular, check for any exhaust fan failure alarms. Check for failed elements. The effect of an element failure is generally minimal unless two failed elements are adjacent to each other.

**NOTE:** Allow the system to stabilize and to enter the PROCESS READY or PROCESS START mode as indicated by a green light on the screen before processing any product.

You must be in “Process Off” condition to exit (indicated by a red light).

### 2.3.1 Power Saving Feature

The actual power number reflects the actual power being used by the machine. This number is based on the % power applied to the zone and the lamp power of the zone. This number can be limited by the “Maximum power” value set up in the SCR Calibration screen. If this value is set at 0, no power is calculated and no limit is set on the power used by the machine. Any non-zero value will cause the system to calculate the power and limit it to this value.

Default maximum power is set to 50%

**NOTE:** Edge heaters are not part of the calculation.

The total power will then always stay below the number set by the user.

**WARNING:** A low power limit may prevent the machine from reaching the Process Ready state, since the user value may not be high enough to reach the desired temperature. For example, setting a maximum of 30 kW will most likely not be enough to reach a steady state in a high temperature furnace when trying to go to 900 degrees C. In this case, the machine will just stay in the warm-up mode.

### 2.3.2 Transport Speed

Move the cursor to the Belt Speed field. Enter the desired transport speed. Vary the conveyor speed from minimum to maximum, checking for smooth operation at all speeds. To check for belt speed accuracy, set the speed at its midrange setting. Place a coin or metal ruler on the moving belt and time through two fixed points while the furnace is in the off or COOL DOWN mode.



## **2.4 Furnace Shut Down**

### **2.4.1 Shut Down Modes**

There are five basic levels of shut down on the furnace:

1. EMO – Emergency Off
2. Control System Off
3. Standby
4. Auto Shut Down
5. Complete Shut Down

### **2.4.2 EMO Shut Down**

For immediate shut down of the furnace:

- 1) EMO - Press any of the Emergency OFF (EMO) Buttons.
- 2) All system will immediately shutdown, except for furnace computer and monitor.

### **2.4.3 Furnace Control System Shut Down**

To shut down the furnace control system:

- 1) Press FURNACE POWER OFF Button .
- 2) Power to heating elements will turn off immediately. Rest of systems remain energized until all zones are below 100°C.
- 3) After all zones reach 100°C, all systems shut down except furnace computer and monitor.

### **2.4.4 Cool Down**

To place the furnace in “standby” mode for quick restart (to load and run new recipe):

- 1) Using PC mouse, click the COOL DOWN button on the PROCESS screen to remove power from the heating elements. The heating elements turn off immediately. You will hear the K1 lamp power contactor release with a click. The furnace control system will continue to run the belt, cabinet cooling fans, product cooling fans, and keep process gas flowing during COOL DOWN.
- 2) When all zones are below 100°C, COOL DOWN is complete. The furnace may be left in this condition with belt running and process gas flowing indefinitely. You may manually turn off the process gas flow at this point without causing harm to the furnace, although you must remember to turn it back on prior to restarting the furnace.
- 3) To restart the furnace (after loading a new recipe or to run the current recipe again), click the WARM UP button on the Process screen, referring to section 2.3, item 5) Furnace warmup.

### **2.4.5 Auto Shut Down (Included option)**

Auto Shut Down allows an operator to initiate the shutdown sequence and not have to be present when the furnace completes COOL DOWN to complete the sequence. After Auto Shut Down is complete, the furnace computer remains running and prepared for quick WARM UP.

To initiate the Auto Shut Down sequence while in PROCESS START or WARM UP mode on the PROCESS screen follow steps 1 and 2. If all furnace zones are below 100°C, go to step 2:

1. Click COOL DOWN on Process screen
  2. Press FURNACE OFF button
- 1) COOL DOWN. Using the PC mouse, click the COOL DOWN button on the PROCESS screen to remove power from the heating elements. The heating elements turn off immediately. You will hear the

## Section 2

K1 lamp power contactor release with a click. The furnace control system will continue to run the belt, cabinet cooling fans, product cooling fans, and keep process gas flowing during COOL DOWN.

You may move to Step 2) at any time after clicking COOL DOWN, or the furnace can be left in this condition without problem. However, until FURNACE OFF is pressed, the belt and auxiliary systems will continue to run even after COOL DOWN is through.

- 2) **FURNACE OFF.** Press the FURNACE OFF button on the control console.

While still in COOL DOWN, the MAIN POWER panel in “ON” and FURNACE POWER lights is “OFF”. All controls and accessories (belt motor, fans, light tower, etc.) are still “ON” and just the heating elements on the furnace are “OFF”. When all zones are below 100°C, COOL DOWN is complete and the control system will stop the belt automatically and shut off any other automatic systems.




Figure 2.4.1 FURNACE ON and FURNACE OFF buttons

When both steps 1 and 2 are complete, the furnace will be shut down. In this state, the computer remains ON and power is still supplied to the furnace electricals. If the furnace is not equipped with Auto Shutdown, the process gas will still be flowing to the furnace until the valve is manually closed. The furnace can be left in this state for considerable time without harm to the furnace. For complete shutdown of the furnace see 2.4.6 Complete Shut Down.

### 2.4.6 Complete Shut Down

For complete shutdown of all systems and power to the furnace follow steps 1-5:

Table 2-4 Complete Shut Down Summary	
<b>1. Cool Down</b>	Click COOL DOWN on the Process screen.
<b>2. Furnace OFF</b>	Press Furnace Power OFF button.
<b>3. Computer OFF</b>	Click Start/Shut Down to close Windows and shut down computer. 
<b>4. Process Gas OFF</b>	Manually close process gas valves.
<b>5. Main Power OFF</b>	Turn OFF furnace circuit breaker, 3-phase disconnect if so equipped or facility circuit breaker for furnace to isolate furnace electrically.

#### Complete Shutdown Detail

- 1) **COOL DOWN.** See section 2.4.5, subsection 1).
- 2) **FURNACE OFF.** See section 2.4.5 , subsection 2).
- 3) **COMPUTER SYSTEM.** The computer system is normally left ON between short periods of furnace shut down. However, after COOL DOWN is finished, for Complete Shutdown, exit the Furnace program from the Process or Security screen. Then, click on Windows Start/Shut Down to turn the computer OFF. The computer will Power OFF after the operating system closes all files are closed.

- 4) **PROCESS GAS.** For furnaces equipped with the Auto Gas Shutoff feature, the process gas valves will close after COOL DOWN is finished. For complete shutdown, manually close process gas supply valves, but only after COOL DOWN is complete.
- 5) **MAIN POWER.** The main power is not automatically disconnected from the furnace. If you wish to disconnect the main power to the furnace, wait until steps 1-3 are complete before throwing the facility power breaker.

### 2.4.7 Turn Off Furnace PC and Monitor

Shutdown of Windows XP or Windows 7 and the furnace computer is only required if you are disconnecting facility power to the furnace.

- 1) **LOG OFF.** Using the PC mouse, go to the Security screen. Click your user name in the User List and click Log-Off. Clicking on the Exit button will take you out of furnace operation mode when all zones are below 100°C and the belt has stopped.
- 2) **SHUT DOWN.** From the Windows Desktop, select start, then select Shut Down. The computer will Power OFF after the operating system closes all files.

### 2.4.8 Exit Furnace Program

- 1) **EXIT FROZEN PROGRAM.** Using the PC keyboard, press ALT-F4 to exit the active program.
- 2) This method of closing the furnace program should only be used to exit a frozen program. It will not affect the program running in the PLC. If still in Cool Down, the furnace will continue to run until the Cool Down sequence is complete.

Note: If communication is lost to the PLC LCM4 controller, the furnace program will freeze. To exit any frozen Windows® program, Press Alt-F4 on the keyboard.

### 2.4.9 Shut Down Considerations

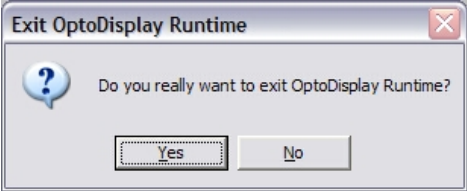
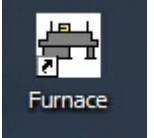
The furnace should be shut down when more than an hour or two will elapse between production runs. A shutdown conserves energy and prolongs the life of the furnace and elements. Follow the steps in sections 2.4.4 Cool Down or 2.4.5 Complete Shut Down for short duration shutdowns.

The furnace computer is often left running if the furnace is to be down for less than 2-3 days. Leaving the computer on for longer period will not harm the system.

## Section 2

### 2.4.10 Restarting the Furnace after Auto Shut Down

Auto shutdown turns off process gas and the Opto22 PLC after Cool Down. Since the computer remains on, the PLC must be re-initialized. Follow the steps per the RESTART table to start the furnace after Auto shutdown.

<b>Table 2-5 Restarting the Furnace after Auto Shut Down</b>	
<p>After Auto Shutdown, the furnace computer left ON, while furnace belt, lamps and all auxiliaries are OFF. In this state the furnace program will not be communicating with the PLC and, therefore, must be closed and reopened after the furnace is restarted to re-establish communication with the furnace.</p>	
<p><b>1. Close Furnace program</b></p>	<p>Click in the center of the furnace program screen and use Alt-F4 to close the furnace program.</p> <p>Note: Alt-F4 is a Windows command to close the active window. If Alt-F4 does not close the main furnace program, repeat the Alt-F4 command until you see the Exit OptoDisplay Runtime dialog box. Do not restart the furnace program until the furnace is ON.</p> <div style="text-align: right;">  </div>
<p><b>2. Main Power</b></p>	<p>Verify the Main Power ON button is lit. Disconnect switch should be on, all panels in place and EMO switches reset.</p>
<p><b>3. Furnace ON</b></p>	<p>Press Furnace Power ON button. Furnace ON light illuminates.</p> <p style="text-align: center;"><b>Wait 5 minutes for the Opto22 PLC to sync with the Furnace computer.</b></p>
<p><b>4. Start Furnace Program</b></p>	<p>Press Furnace program icon to initialize communication with the PLC and start the furnace program.</p> <p>Log in to the furnace software. Log-in is only possible when PLC and Computer are communicating.</p> <div style="text-align: right;">  </div>

**CAUTION:** Dangerous voltages are now present throughout the electrical systems of the furnace. Make sure that any probes in the furnace are placed on the belt surface only. Probes extending over the sides of the belt may contact high voltage terminals!

## 2.5 Recipe Screen (Off Line Edit)

### 1) Go to Recipe Screen

NOTE: When editing this screen the process is not changed.

Level 1 access will allow the operator to inquire, select, and run preset parameters and recipes. Level 2 access will allow the operator to edit and save recipe data.

When initializing the “Load & Run” field, the process screen is updated and the Recipe Setup screen is changed to On Line Edit.

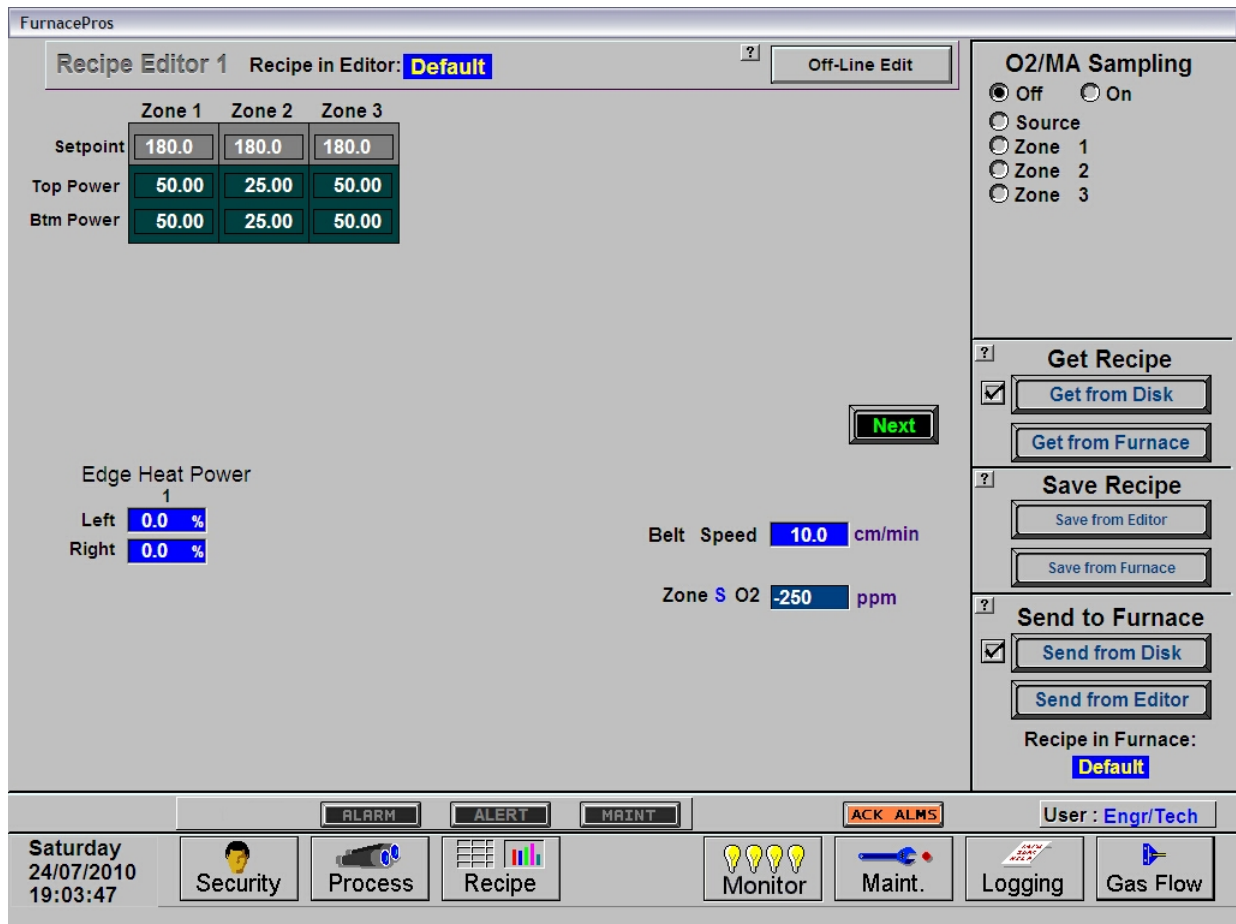


Figure 2.5.1 Recipe Screen

- 2) Load Recipe (Access Levels 1 and 2)
- 3) Delete Recipe (Access Level 2)
- 4) Edit Stored Recipe, Save Stored Recipe (Access Level 2)

**NOTE: Do not use this feature on the current recipe while in ready mode and while processing parts.**

### 2.6 Recipe Modification

#### 2.6.1 Set point Modification (Access Level 2)

##### 1) Change Temperature (Access Level 2)

Place the cursor on the temperature setting to be modified. Type the new setting and press enter from the keyboard.

NOTE: Temperature display is in degrees Celsius.

##### 2) Change Power Distribution (Access Level 2)

###### a) Heating Element Power distribution

Default value is 50% top and bottom.

Place the cursor on the power distribution setting to be changed. Type in the new setting and press enter from the keyboard. This can be between 0% and 100%.

Power distribution is a scaled percentage of maximum power output to the top and bottom heating elements.

The maximum power is typically set at 1.5 times the actual percentage of power used when the furnace is in the “Ready” mode.

###### b) Edge Heater Power Distribution (Access Level 2)

The edge heaters are located at the outer edges of the belt and run the entire length of the heated chamber. They can be used to improve the temperature uniformity across the width of the belt. Click on the blue cell to modify the percentage on. The range is 0-100% and can be set in increments of 1%. See the Reference Manual for more on using the edge heaters.

#### 2.6.2 PID Zone Tuning (Access Level 2)

On the recipe screen, click on the desired “Edit Zone PID Setting” pushbutton. A Zone Tuning dialog box will appear with default values for proportional gain, integral, and derivative, if not already shown on the screen. Place the cursor on the value to be modified and click. Type the new setting and press enter from the keyboard. See Reference Manual, Chapter 9 for Process Engineering considerations in establishing PID parameters.

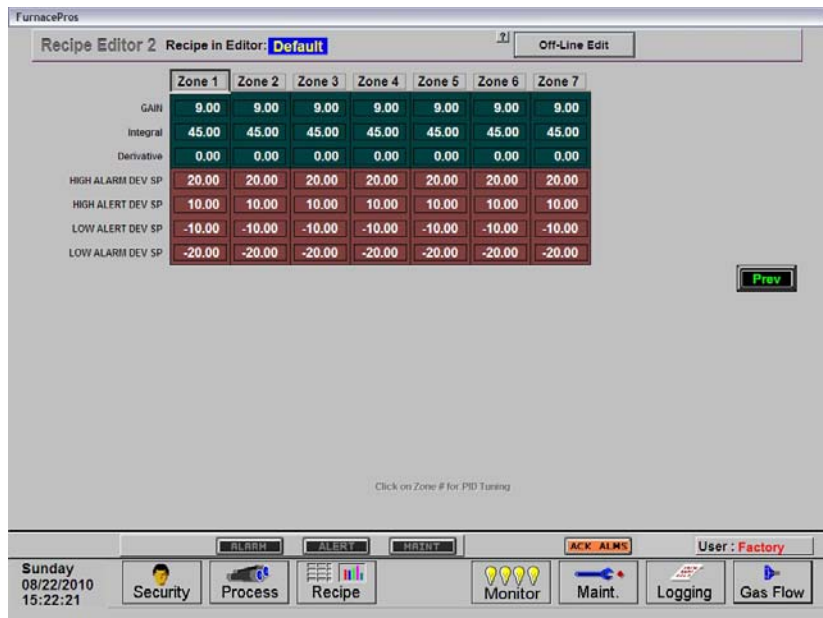


Figure 2.6.1 Zone Tuning Recipe Screen

Parameter	Initial Values
Proportional Gain	9
Integral	45
Derivative	0

Gain (Proportional)

Gain influences the proportional response of the PID by amplifying the error between set point and actual temperature to establish an output level. The proportional band, in degrees

Celsius, is defined as 100 divided by the gain. An increase in the gain reduces the amount of temperature deviation required to turn the heating elements on at full distributed power or decrease it. Too small a value will cause the system to be sluggish in response. Too high a value will cause the system to overshoot and be unstable.

### Integral

The integral (or Reset) function corrects temperature offset.

### Derivative

Derivative is a rate function that clamps temperature overshoot/oscillation. The maximum set point for the derivative function should be  $\frac{1}{4}$  of the integral value.

### 2.6.3 Change Transport Speed (Access Level 2)

Place the cursor on the Belt Speed field, click, type in the new value and press enter from the keyboard.

NOTE: Transport speed is displayed in inches per minute.
--

### 2.6.4 Change Gas Flow Settings

This screen represents flowmeter settings stored for selected recipe. The flowmeters must be manually adjusted for the desired flow. Click on each respective cell to record new values for the recipe being edited. See section 2.2.7 for more information.

### 2.7 Alarm Status (All Access Levels)

This is a display only feature. Any existing alarm conditions, such as transport speed error, are highlighted on the Process screen. To clear or silence an alarm/alert, move the cursor to and click on “Acknowledge Events.” See Section 3 SERVICE & TROUBLESHOOTING for further information.

### 2.8 Data Log/Alarms and Alerts

#### 2.8.1 Occurrence and Timed Logging Control (Access Levels 1 and 2)

Move the cursor to and click on “Logging” to see any occurrence.

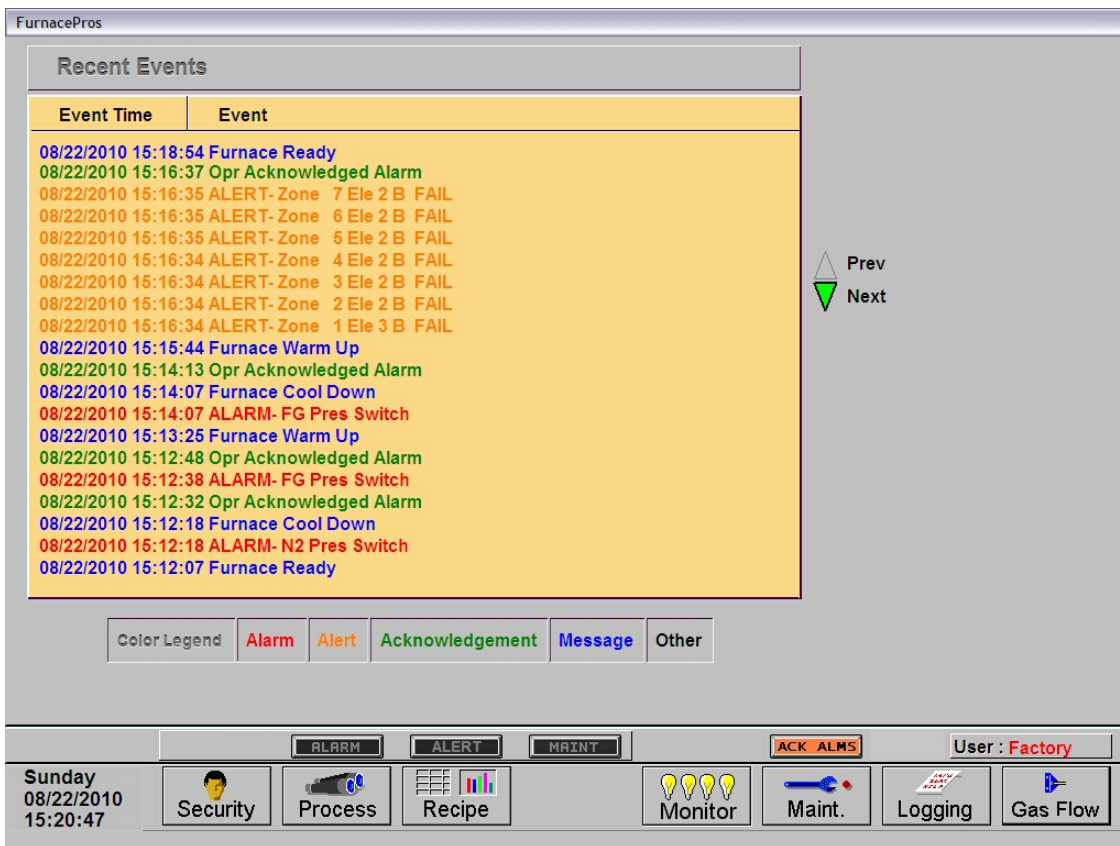


Figure 2.8.1 Event Logging



**2.8.2 IPS Alarms**

Inlet Pressure Switches are installed on the process gas manifolds. These switches are normally open. They close when proper pressure is present in the process gas supply lines.

The current switches are set to open when pressure falls below set points in the following table:

Table 2-7 Initial Alarm Settings		
Manifold	Pressure	
Nitrogen/CDA	60 psi	4 Bar
Forming Gas (option not included)	60 psi	4 Bar

The pressure switch set points can be adjusted manually. Locate the switch in the process gas supply line. To increase the set point turn the wheel clockwise. Turn the top of the switch counter clockwise to decrease the pressure set point so the alarm will not occur until the pressure drops to a lower point.



Figure 2.8.2 IPS Inlet Pressure Switch

**2.8.3 Auto Gas Shutoff (Included option)**

This furnace may be equipped with Auto Gas Shutoff. The Auto Gas Shutoff feature consists of solenoid valves on the process gas supply lines integrated with the furnace. These valves open and allow Process Gas to flow when Furnace ON is pressed. This feature is designed to conserve process gas. To shutdown the furnace the operator need only put the system into Cool Down and press Furnace OFF. When all furnace zones reach 100°C or lower for at least one minute, the furnace shuts down and the process gas valves close.

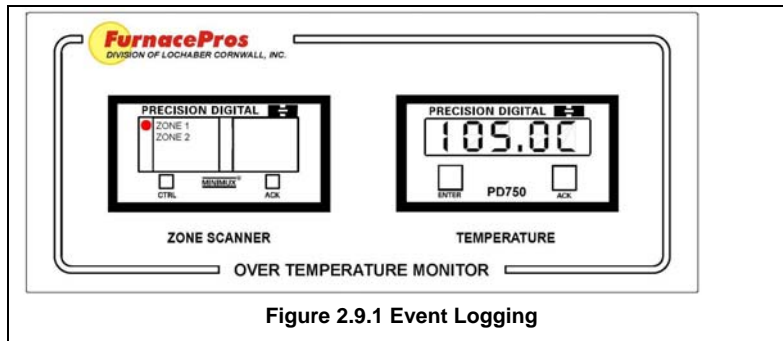
The Auto Gas Shutoff valves fail in the closed position.

### 2.9 Over Temperature Alarm Operation (option not included)

The Over Temperature Alarm system consists of redundant zone thermocouples, a scanner/annunciator and digital panel meter hardware integrated into the furnace software. The scanner/annunciator and digital panel meter are mounted on top of the furnace near the flowmeter controls.

**NORMAL OPERATION.** The system scans each zone and passes a temperature signal to the digital panel meter. The operator can view the temperature on the panel meter and the respective zone being monitored will be indicated on the scanner

**ALARM.** If the temperature in any zone reaches the alarm set point, an alarm will sound in the scanner/annunciator and the furnace will go into Cool Down, the heating elements will be shut off by the controller. To silence the alarm, press ACK on the scanner/annunciator. The furnace cannot be restarted until the zone temperature drops below the alarm set point.



## 2.10 Remote Access

In order to allow for remote diagnostics of in-process furnace operations, a 2<sup>nd</sup> network interface card (NIC) is provided as well as a modem with communication software. The remote operator, in conjunction with on-site personnel, can simultaneously view the Process screen and have access to input and control features.

Remote access can be accomplished as follows:

- Broadband connection via internet access

### 2.10.1 Network Connection

To connect furnace to the network:

Wired: Connect a Cat5 or higher TCP/P Cable to the RJ45 port below the entrance of the furnace. Set LAN Connection 2 to receive network signals.

Note LAN Connection 1 must be reserved for the furnace control system.
--

Wireless: Connect a USB wireless transmitter such as D-Link DWA-140 RangeBooster Wireless-N network adapter to the control console USB port (behind the keyboard). Setup connections to receive network signal.

### 2.10.2 LogMeIn

The preferred method for factory diagnostics is to use the LogMeIn.com internet service for remote diagnostics:

If the computer is LogMeIn enabled:

Make sure there is an internet connection to the local network connection 2 port

Click on the blue LogMeIn icon in the menu or next to clock on desktop menu bar.

Click Overview

Click TURN ON button.

Note: When TURN OFF button is shown, the system is already enabled for LogMeIn.

notify the factory the that system is enabled for LogMeIn and on-line.

If the computer is not LogMeIn enabled, contact FurnacePros for installation instructions.

### 2.10.3 Remote Desktop

To use WindowsXP in desktop mode, verify furnace computer is enabled for remote connection. On remote WindowsXP computer use Remote Desktop Connection to interface with the furnace.

## 2.11 View Alternate Programs

To switch the viewing window between ProControl™ Furnace Process Software and another application (the WinKIC or DataPaq Windows Applications) press and hold down the ALT key, and then press TAB repeatedly. When the title of the desired Windows Application appears, release ALT. The new application will appear in the foreground. Repeat the procedure to return ProControl™ Furnace Process Software to the active window.

## 2.12 Element Monitors

The Element Monitoring system consists of a panel of 6-channel circuit boards which detect the location of a failed heating element. The circuit boards monitor the current to the lamps and activate an audible alarm and visible alarm upon sensing an element failure. The display shows the specific location of the lamp or lamp string (multiple lamps wired in series make up a string) containing the failed lamp. The audible alarm alerts the operator immediately if a lamp fails and allows him to discern its location and determine if process results will be appreciably affected.

Access the Monitor screen in the software to view the status of the heating element strings. Click on the Serial EM Test button to determine if all boards are communicating properly with the PLC controller. Each board contains a dip switch which determines the digital address of a given board and the software checks each board in sequence. Boards are addressed from 0 to nn. Communication failure or individual lamp failure of itself will not shut down the process. The process will only shut down if a lamp failure adversely impacts the furnace ability to maintain set point temperatures.

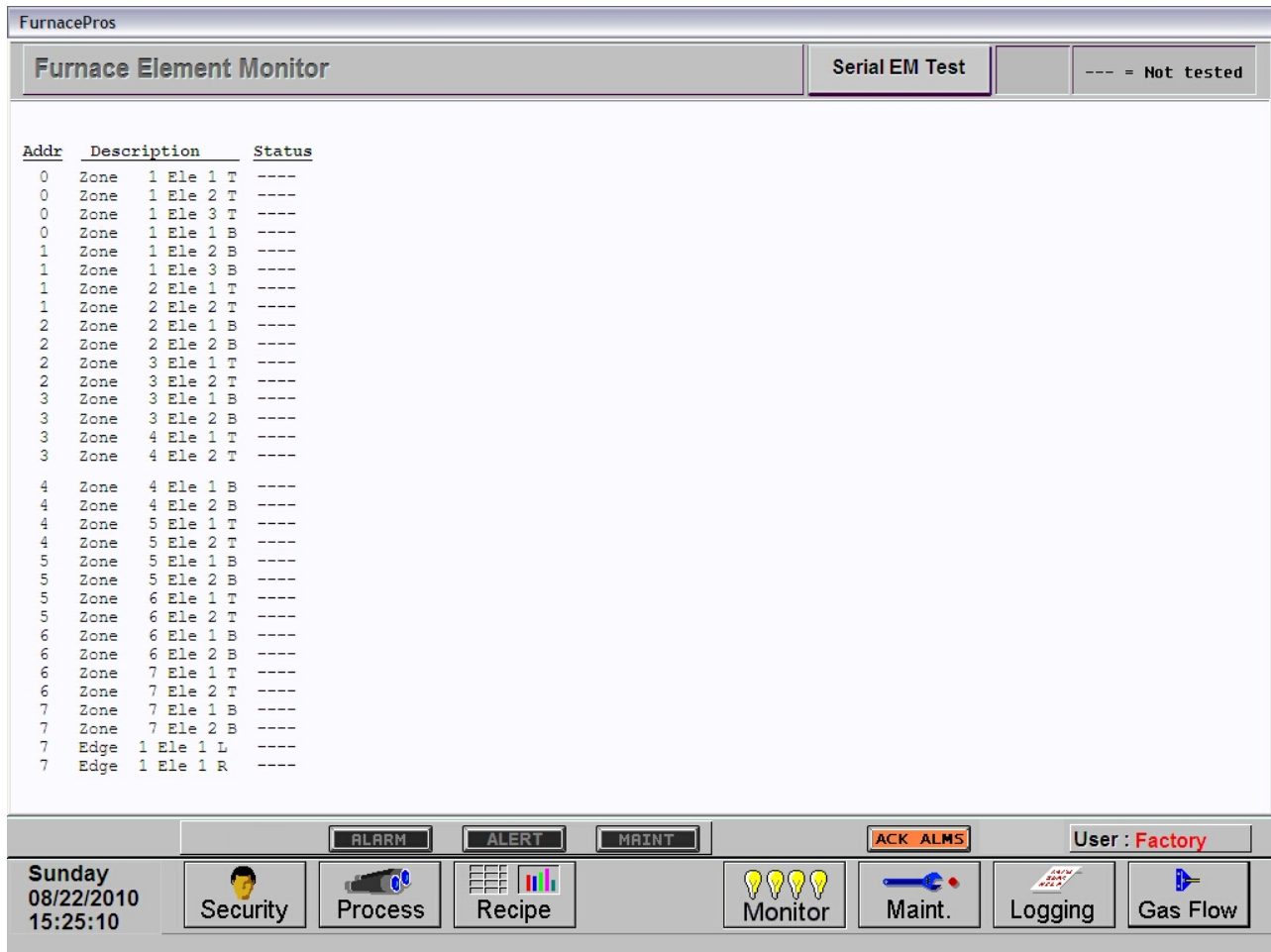


Figure 2.12.1 Element Monitor screen